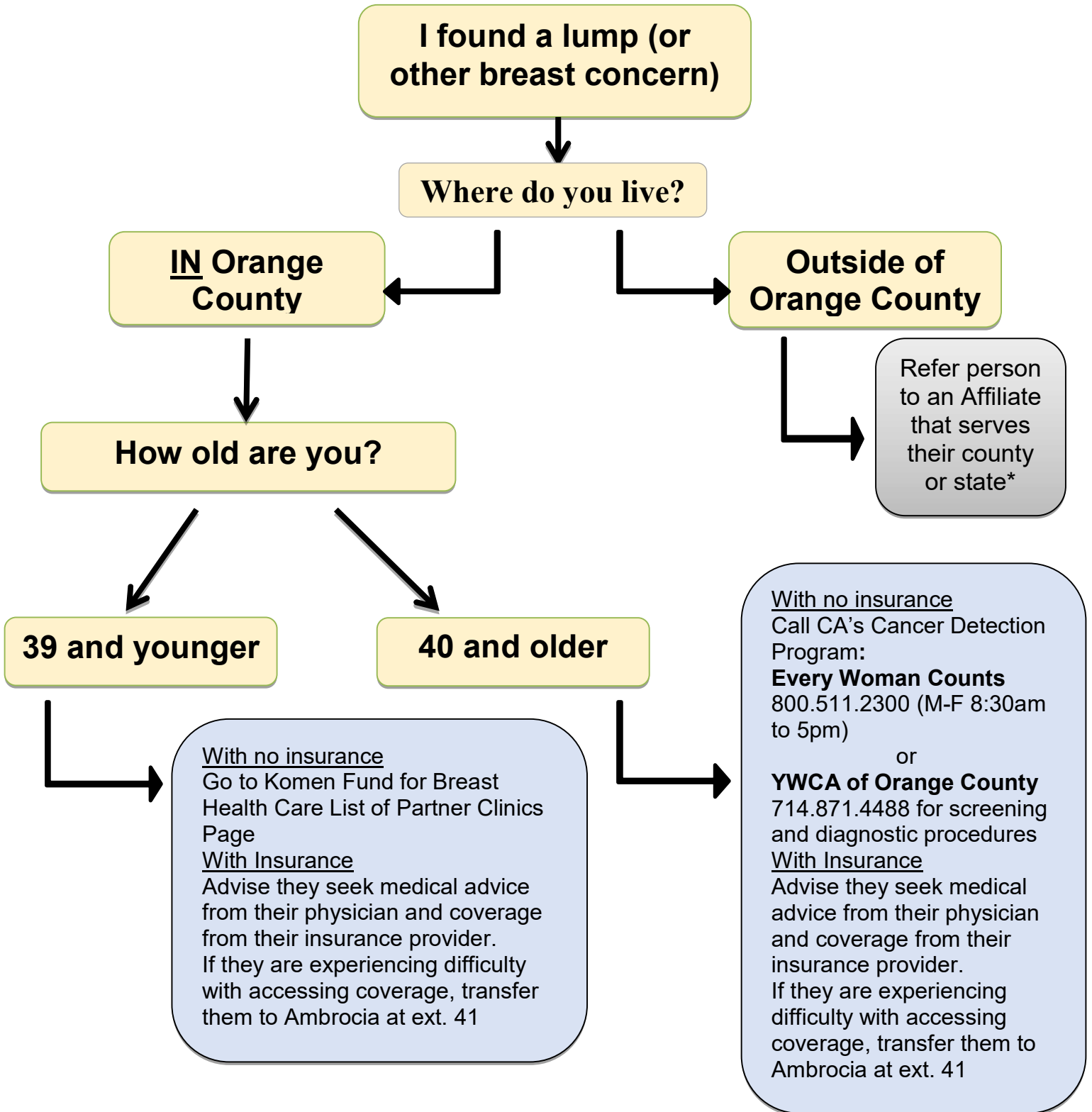




Breast Health Referrals





KOMEN FUND FOR BREAST HEALTH CARE PARTNER *Partner Clinics*

Susan G. Komen® Orange County has a program called the “Komen Fund for Breast Health Care” with participating clinics that can cover the cost of diagnostic breast health services.

Please Note: Make sure to recommend to the caller that they should inform the clinic operator that they have a breast concern, and were referred by Komen OC for the Komen Fund for Breast Health Care Program.

City/Location:	Phone #:	Initial Visit Costs:	Add'l Info:
ANAHEIM			
Central City Community Health Center 2237 W. Ball Road Anaheim, 92804	(714) 490-2750	\$0 <i>They also have a sliding fee scale</i>	M-F 8:30a to 5:30p Sat 8:30a to 5p
Planned Parenthood – Anaheim Health Center 303 West Lincoln Ave. #105 Anaheim, 92805	Direct Line of the Breast Coordinator (714) 922-4162 Appointment Line: (714) 922-4100	\$0 <i>They also have a sliding fee scale</i>	M-F 7a to 6p Sat-Sun 6:30a to 4:30p
COSTA MESA			
Planned Parenthood – Costa Mesa Health Center 601 W. 19 th Street Costa Mesa, 92627	Direct Line of the Breast Coordinator (714) 922-4162 Appointment Line: (714) 922-4100	\$0 <i>They also have a sliding fee scale</i>	M-F 7a to 6p Sat-Sun 6:30a to 4p
FULLERTON			
North Orange County Regional Health Foundation 901 W. Orangethorpe Avenue Fullerton, 92832	(714) 441-0411	\$25 <i>They also have a sliding fee scale</i>	M, T, Th, F 9a to 6p Wed 9a to 5:30p Sat, 8a to 4:30p

HUNTINGTON BEACH			
AltaMed Medical Group - HB Community Clinic 8041 Newman Ave. Huntington Beach, 92647	Direct Line of the Breast Coordinator (714) 500-0284 Orange County Appointment Line: (888) 499-9303	\$45 <i>They have a sliding fee scale</i>	M, W 8a to 7p T, Th 9a to 7p F 8a to 5p Sat 8a to 1p
MISSION VIEJO			
Planned Parenthood – Mission Viejo Health Center 26137 La Paz Rd. Suite 200 Mission Viejo, 92691	Direct Line of the Breast Coordinator (714) 922-4162 Appointment Line: (714) 922-4100	\$0 <i>They also have a sliding fee scale</i>	M-F 7a to 5p Sat-Sun 7a to 4:15p
ORANGE			
AltaMed Medical Group – Orange, Chapman 4010 E. Chapman Ave. Orange, 92869	Direct Line of the Breast Coordinator (714) 500-0284 Orange County Appointment Line: (888) 499-9303	\$45 <i>They also have a sliding fee scale</i>	M, W 8a to 7p T, Th 9a to 7p F 8a to 5p
Planned Parenthood – Orange Health Center 700 S. Tustin Street Orange, 92866	Direct Line of the Breast Coordinator (714) 922-4162 Appointment Line: (714) 922-4100	\$0 <i>They also have a sliding fee scale</i>	M-Th 6:30a to 5p Fri-Sun 6:30a to 4:30p
SANTA ANA			
AltaMed Medical Group – Santa Ana, Main Street 1400 N. Main Street Santa Ana	Direct Line of the Breast Coordinator (714) 500-0284 Orange County Appointment Line: (888) 499-9303	\$45 <i>They also have a sliding fee scale</i>	M, W, F 8a to 7p T, Th 9a to 9p Sat 8a to 5p
Hurt Family Health Clinic, Inc. 1100B North Tustin Ave., Suite D Santa Ana, 92705	Direct Line for the Breast Coordinator: (714) 247-0300	\$0 <i>They also have a sliding fee scale</i>	M-F 8a to 5p
Planned Parenthood – Santa Ana Health Center 1421 E. 17 th St. Santa Ana, 92705	Direct Line of the Breast Coordinator (714) 922-4162 Appointment Line: (714) 922-4100	\$0 <i>They also have a sliding fee scale</i>	M-Th 7a to 6p F-Sun 6:30a to 4:30p
Serve the People Community Health Center 1206 East 17 th Street Suite 101	(714) 352-2911	\$0 <i>They also have a sliding fee scale</i>	T-F 8a to 5p Sat 8a to 4:30p

Santa Ana, 92701			
STANTON			
Central City Community Health Center 12116 Beach Blvd. Stanton, 90680	(714) 898-2222	\$0 <i>They also have a sliding fee scale</i>	M-F 8:30a to 5:30p
TUSTIN			
Hurtt Family Health Clinic, Inc. One Hope Drive Tustin, 92782	Direct Line for the Breast Coordinator: (714) 247-0300	\$0 <i>They also have a sliding fee scale</i>	M-F 8a to 5p
WESTMINSTER			
Planned Parenthood – Westminster Health Center 14372 Beach Blvd. Westminster, 92683	Direct Line of the Breast Coordinator (714) 922-4162 Appointment Line: (714) 922-4100	\$0 <i>They also have a sliding fee scale</i>	M-Th 7a to 6p F 7a to 5p Sat-Sun 6:30a to 4:30p